

**Surname
Variants***Metcalbe**Metcalb**Medcalbe**Medcalb**Metcaff**Midcalb**Medecalb**Metecalb**Metkalf**Mydcalf**Mitcaff**Mitkiff**Meytecalbe**Matcalbe**Modcalbe**Metcaff**Midcaff**Meatcaff**Midcalph*

Me'cca' is phonetic
dialect for Metcalfe

Can you add to this
list from records you
have come across?

Please email

editor@metcalfe.org.uk



THE METCALFE SOCIETY
Established 1980

Message from the Chair

Well, what a change in the world since our last edition – please keep yourselves safe until things calm down.

As you will be aware, we are holding our AGM and Muster on Saturday 4th October this year. It is our 45th anniversary this year, so perhaps a quick recap about the Society is appropriate.

Like most things, the Society started small. It was initially an offshoot of the Yorkshire Archeological Society's Family History section started 1979. By the following year, a small group of their members had found they had something in common – and ancestor with the name Metcalfe. They started to research it and eventually it grew into enough interested people to form a Society specifically to study the name. Those early researchers did marvellous work, not just going round as many record offices and archive centres as they could – in person in those days, also visiting local churches - taking notes from the original parish registers wherever they could. These notes were all on paper lists, and eventually, as the world began to use computers, the information was transferred to a database, the original lists are still available if necessary. They joined the Federation of Family History Societies and the Guild of One Name Studies, and other more local organisations and started to promote the Society doing talks and attending Family History Fairs – to spread the word. Their research also included variations on the basic name, with and without the 'e' at the end, with a 't' or a 'd', or an 'i' instead of an 'e' in the middle of the name, plus other differences - well over 30 variants world-wide.

To date, we have had nearly 2500 members, and the database contains over a million individuals, from the UK as well as overseas. The records are made up of the usual Birth, Marriages and Deaths, but also include family groupings wherever possible to make it easier for you, our members, to trace a family line. We also have about 1,500 wills, some dating back to the 1500's. We are continuing to add to our database regularly with information collected from the various record and archive offices across the world →

In this issue

Message from the Chair P.1

Alfred Sargison Metcalf P.3

A Botanical P.5

A Research Journey P.6

What's in a Name P.8

Now Then 13: More on probate records P.9

Genealogy Events P.17

New Member Birth Briefs P.18

Metcalf Society AGM P.19

AGM Early Bird offer P.21

Registration and Proxy Form P.22

Society Contacts P.23

as well as from online sources and overseas records as they become available. With members in America, Australia, Canada and New Zealand as well as other countries, we do have a lot of information on how dispersed the family and the name has been - wherever those early adventurers (or not) went. Some of the research has been published in our two main volumes, *Metcalfe – History of the Clan* and *Metcalfe Family Histories*, as well as in pamphlets.

As we move into our 46th year, the new website is taking shape with a more secure passcode system, and a lot of the information has already been transferred over. The main records are there and can be accessed once you have logged in to the site. By the time you read this newsletter, the 1200 wills from the old database will have been checked and updated, and work is starting on adding the 300+ items acquired in the last five years. Publications such as the *Mecca News* issues and past e-newsletters will also be available on the site.

So where can you help?

- If you find someone we do not have in the database, please let us know so they can be included. It might be an additional child that was not known about in the past – it might lead you to a distant relative you knew nothing about.
- If someone is missing, we do need to know about them. Some records may be very brief but if you find a marriage or birth related to that individual, we can add them to it.
- If the record is missing some information that you have found from your own research, again, please tell us so that we have as complete a record as possible. Occupations and anything distinctive may help identify one individual from another.
- If you find something incorrect, please do tell us so we can correct it. This is especially essential
- Remember we cannot publish records of individuals living within the last 100 years. If you find someone who died in that period, they can be added, but often if they were born post 1925, they will probably not be included in the data yet.

Do tell us what you are finding. Without **YOUR** help, we cannot keep the database up to date (not a Trumpian shout).

And finally, do you have an odd hour to help run the Society? We are all getting older so we do need new blood and ideas to carry the Society forward to our 50th anniversary.

And then, of course, you can come along to the Muster. Details of the day, as far as we are able to announce at the moment are included in this newsletter. We look forward to seeing as many of you as can make the day and hope to make it a very special event. After all, we are all connected in some way – so it is like meeting your distant relatives.

Thank you all for your support in the past, and we hope you will continue to enjoy our Society.

Jo Heron, Chair

Death of a member

John Hyndes, member 184, died on 3rd April this year. John did come along to some of the Musters and may be know to those of you who are amongst the earlier members.

If anyone has John in their tree – the family would love to hear from you – please contact enquiries@metcalfe.org.uk and we will pass on your message.

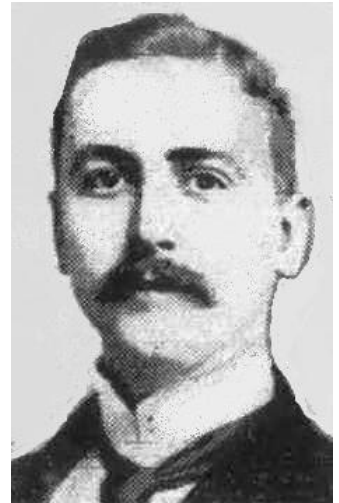
Alfred Sargison Metcalf – journalist and soldier

In the column headed Roll of Honour, the Sydney Morning Herald of 29 June 1915 carried many notices that reflected the carnage occurring among the Australian troops who had landed at Gallipoli Cove on 25 April 1915. Three notices were for Alfred Sargison Metcalf.

METCALF.—Alfred Sargison, beloved son of Mrs Metcalf, Elimatta, Rose Bay who gave his life for his country at the Dardanelles.

METCALF.—Alfred Sargison, killed in action at the Dardanelles only brother of Wm Metcalf, St. Jerome, Kensington for King and Empire.

METCALF.—In honour of a brave soldier Alf Metcalf killed in action at the Dardanelles. Inserted by his sorrowing friends, Gerald and Rose Ryan and family, Manly¹.



While the notices didn't state the date of death (19 May 1915), they tell us a few important details: the deceased soldier's mother and brother were also in Sydney, and he had lived there long enough to form friendships, possibly among the Catholic community. Alfred's enlistment papers give us some more details. He signed on quite early, in suburban Randwick (Sydney) on 29 August 1914; he was a Catholic, born in 'Longbenton, Newcastle-on-Tyne, Northumberlandshire'; he was a wool classer, aged 36 years and 1 month.

Alfred had died just three weeks after the ill-fated landing of 16,000 Australian and New Zealand troops.²

Further details of the man soon followed. An obituary in the Catholic Press (Sydney) provides something of a surprise.

Private Alfred S. Metcalf (killed) was a well-known journalist who, in conjunction with Mr. Martin Donohoe, gained some prominence in London a few years' back by unmasking the fanciful De Rougemont. At the time he was Paris correspondent of the London 'Daily Chronicle.' His mother resides at Rose Bay, Sydney.³

So, not only was Alfred a somewhat celebrated journalist, it also emerged that he was over 40 at his death, having lowered his age by three years at enlistment.

Exposing 'Louis De Rougement'

M. Louis De Rougement had created a sensation in England, starting in August 1898 with the first instalment of his extraordinary story in a new monthly, World Wide Magazine. The tales were of adventures in tropical waters, of a shipwreck akin to that of Defoe's Robinson Crusoe, of sea monsters and riding turtles, as well as finds of gold, pearls and diamonds. However, his story was exposed as less than truthful by the Daily Chronicle, with journalist Arthur S Metcalf interviewing

¹ Sydney Morning Herald (SMH), Tuesday 29 June 1915, p 8.

² The landing of troops from Australia and New Zealand (ANZAC) at Gallipoli cove was supported by British, French and Indian troops landing elsewhere on the Peninsula. On the evening of the first day, when over 2,000 had been killed or wounded by the waiting Turks, the ANZAC commanders urged Commander-in-Chief General Sir Ian Hamilton to withdraw but Hamilton refused. This decision heralded an immense military failure which saw 115,000 British and dominion troops killed or wounded, plus 27,000 French troops and over 250,000 Turkish and Arab troops. No territory was won or lost.

³ Thursday 1 July 1915 p 20.

family members and providing information to identify the person behind De Rougement as French-born M. Henri Louis Grien.⁴

In fact, the mature-aged and well-travelled Henri had previously lived in Sydney and married a young wife there in April, 1888. After four children he then set off again, first to the Palmer River goldfields near Cooktown in far north Queensland, and then to England by 1898. He eventually returned to a rather lukewarm reception in Australia.

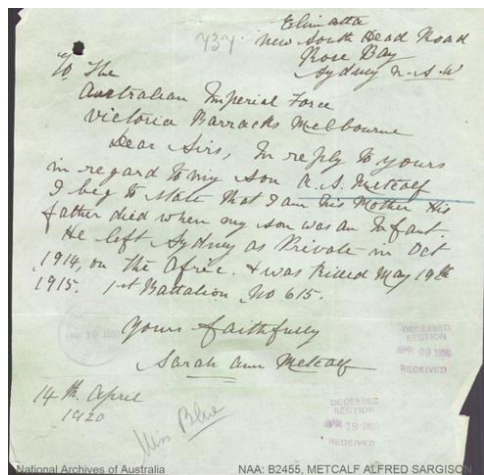
As for Alfred Metcalf, another obituary in July 1915 provides more information about the journalist turned wool classer.⁵ After schooling in Newcastle-on-Tyne, he worked as a clerk then went to a news bureau in Paris before appointment to the Paris staff of the London Daily Chronicle, representing that journal when the Czar of Russia came to Paris. Alfred was also acting as the Paris correspondent of the Sydney Morning Herald. He subsequently came to Australia between 1902 and 1910, as did his mother Sarah and brother William. By the time war broke out in July 1914, he was no longer working as a journalist but as a wool classer at Bourke, in the harsh conditions of far western New South Wales.

A mother's love and pain

Alfred's army file shows that Sarah Ann Metcalf not only suffered the loss of her beloved son whom she had raised alone but also the trials of dealing with the army as she sought some mementos of her son.⁶ On 19 July 1915, she wrote in her clear, fluent hand,

On June 25th last I received a cable notifying me that my son Alfred Sargison Metcalf No. 615 1st Inf Brigade and who was attached to Headquarters Staff had been killed in action.

I am therefore writing to you to request that any relics – no matter how trifling – which may have been found on his body, be sent to me at the above address, as naturally they will now be very precious to me.



Late in March 1920, the Australian Army records office wrote to Sarah, asking if Alfred had any nearer blood relations than her, 'for instance, is his father still alive, if so I shall be much obliged for his name and address at your earliest convenience.'⁷ That shocking request elicited yet another letter from Rose Bay. Remaining pragmatic and polite, she stated her full name was Sarah Ann Metcalf and that her husband had died when Alfred was an infant.⁸ (In 1881 and 1891 she was a shopkeeper living with her two sons and a servant, and in 1901 living on her own means with Alfred, journalist and author, in Newcastle-on-Tyne.)

Every year from 1916 to 1931 Sarah Ann Metcalf had an In Memoriam notice published in the Sydney Morning Herald around the 19th of May, with only small variations in the wording. Her final notice was:

⁴ The Burrowa News, Friday 9 December 1898, p 1. By October 1898, Sir George Newnes, owner of the Wide World Magazine, had admitted that De Rougement and the former Sydney resident, Grien, were one and the same, and his narrative was untrue. However, calmer assessments in the 1930s from those with experience in pearling and the tropics, confirmed that a good deal of the story may well have been true, if exaggerated.

⁵ The Argus (Melbourne), Saturday 3 July 1915, p 15.

⁶ William Metcalf married Sarah Ann Hall on 25 December 1869. Dec Qtr 1869, Tynemouth RD, v10b p344.

⁷ NAA:B2455. Alfred Sargison Metcalf, Service Number 615: reply dated 14 April 1920 at folio 30. See <https://recordsearch.naa.gov.au/>

⁸ Most probably 41 year-old William Metcalf, who died in the March quarter of 1875 in the Tynemouth area.

METCALF.—In loving remembrance of my dear son, Alfred Sargison Metcalf, killed in action May 19, 1915. Anzac. Inserted by his loving mother.⁹

Sarah Ann (Hall) Metcalf, died in Sydney on 7 September 1931 aged 78, mourned by her only descendant, her grandson Hall Sargison Metcalf. His father, Sarah's elder son William, had died the previous year.

Sources

Note: All internet sources were accessed in June 2025.

New South Wales Birth Death and Marriages – <https://www.nsw.gov.au/births-deaths-marriages>

Landing at Anzac Cove – <https://anzacportal.dva.gov.au/wars-and-missions/ww1/where-australians-served/gallipoli/landing-anzac-cove>

Trove – <https://trove.nla.gov.au/>

World War I – <https://www.naa.gov.au/explore-collection/defence-and-war-service-records/army-world-war-i-1914-18>

Bernard Metcalfe, M0221

[Editor note: Bernard wrote: “(Alfred) is no relation to me, but his story caught my eyeI have no information on why this man came to Australia, with his immediate family, or in what year they arrived in Sydney.” Does anyone have any info on this man? Please let editor@metcalfe.org.uk know.]

A Botanical

Desmodium metcalfei : The Resilient Metcalf's Tick Trefoil

“*Desmodium metcalfei* is a fascinating plant species that belongs to the legume family, known for its remarkable adaptability and ecological contributions. Often referred to as Metcalf's Tick Trefoil, this plant offers much more than meets the eye. With its unique traits, significant ecological roles, and interesting adaptations, this plant is truly a remarkable member of the flora world.

Desmodium metcalfei is primarily found in the southeastern United States, particularly flourishing in the open woodlands and grassy areas (i.e. Georgia, South Carolina, and Alabama). As a perennial herbaceous plant, it exhibits both resilience and beauty, captivating those lucky enough to encounter it in its natural habitat. Adorned with slender stems and trifoliate leaves, this plant serves as an important forage source for various wildlife and contributes to soil health.”



More info is available [here](#) but who the Metcalf was that this plant was named for was not discovered although there were several American Botanists around at the time it was named.

⁹ SMH, Tuesday 19 May 1931, p 8.

A Research Journey

This is part of a personal journal recording a search for my maternal RODGERS ancestors. It is a much-abbreviated version, hoping it will be of interest.

Family history research is so easy now, at home, computer, cup of coffee at hand, a touch of a button, hey presto! I am sure fellow members will appreciate family research was at a much slower process back in the pre internet days. Maybe we remember the endless footwork involved, searching in weed-high cemeteries, hopeful of some eureka moments. Obtaining certificates from various Register Offices, visiting Libraries spending hours, uncomfortable, deciphering Census records at the microfiche reader.

Many years ago, my Mother and her Aunt were reminiscing about the family, it sparked an interest that has never left me. It has taken me on a long journey, and many miles away from East Lancashire where I once believed my family originated. Coming from an ordinary hard working family background, I have found some sadness along the way, but also to a welcome surprise.

~~~~~  
 In 1992, I obtained the Birth Certificate of my 2 x Gt. Grandfather - John RODGERS, born in 1859 at Grassington. Already knowing John's father's name - Robert RODGERS, but not his mother's maiden name. The Certificate revealed the name - Margaret METCALFE. In order to enhance my research further back in time, I joined the METCALFE Society. The information received was very enlightening, not only on Margaret METCALFE's family, but to the knowledge I have a second METCALFE connection.

Margaret METCALFE, born in 1834 at Buckden, the daughter of John METCALFE and Elizabeth/Betsy RYDER. John METCALFE of Buckden, a labourer and herdsman, married Elizabeth/Betsy RYDER a spinster of Horsehouse, at Hubberholme on the 13th May 1831.

My second METCALFE Family. Arose from the marriage of my 2 x Gt. Grandparents, John RODGERS and Annie BIRTWHISTLE. The couple married on the 8th June 1878 at Burnley. Annie BIRTWHISTLE, born in 1859 at Gargrave, the 2 x Gt. Granddaughter of Joseph METCALFE and Dorothy ATKINSON. Joseph METCALFE, 'a convert from Quakerism' of Pen-y-Ghent, and Dorothy ATKINSON of Kirkby Malham, married at Arncliffe on 16th November 1779.

~~~~~  
 1841 Census - the Parish of Kettlewell. John and Elizabeth/Betsy METCALFE are living with their daughters, Margaret aged 7, Jane aged 5 and Mary aged 2.

In 1851 the Family are in Grassington.

| Parish or Township of <i>Grassington</i> | | Ecclesiastical District of | | City or Borough of | | Type of | | Village of | |
|---------------------------------------------|----------------------------------------------------------|----------------------------------------------------------------------------------------------|----------------------------|--------------------|--------------------|---------------------------------|--|------------------|---------------|
| House No. | Name of Street, Place, or Road, and Name or No. of House | Name and Surname of each Person who abode in the house, on the Night of the 30th March, 1851 | Relation to Head of Family | Condition | Age of Male Person | Rank, Profession, or Occupation | | Where Born | Whether Blind |
| | | | | | | | | | |
| 16 | <i>Grassington</i> | <i>John Metcalfe</i> | <i>Head</i> | <i>Married</i> | <i>30</i> | <i>Eng. Tailor</i> | | <i>Yorkshire</i> | |
| | | <i>Elizabeth do</i> | <i>Wife</i> | <i>do</i> | <i>27</i> | | | <i>do</i> | |
| | | <i>Ralph do</i> | <i>Son</i> | <i>do</i> | <i>2</i> | | | <i>do</i> | |
| | | <i>Margaret do</i> | <i>Daughter</i> | <i>do</i> | <i>17</i> | <i>Spinster</i> | | <i>do</i> | |
| | | <i>Jane do</i> | <i>do</i> | <i>do</i> | <i>14</i> | <i>Spinster</i> | | <i>do</i> | |
| | | <i>Mary do</i> | <i>do</i> | <i>do</i> | <i>12</i> | <i>do</i> | | <i>do</i> | |
| | | <i>Edward do</i> | <i>do</i> | <i>do</i> | <i>2</i> | <i>do</i> | | <i>do</i> | |
| | | <i>Elizabeth do</i> | <i>do</i> | <i>do</i> | <i>6</i> | <i>do</i> | | <i>do</i> | |
| | | <i>John do</i> | <i>do</i> | <i>do</i> | <i>do</i> | <i>do</i> | | <i>do</i> | |

| | Age | | Occupation: | Place of Birth: |
|---------------|-----|------|---------------|-----------------------|
| John METCALFE | 50 | Head | Ag. Labourer | Buckden |
| Elizabeth " | 41 | Wife | | Scampston, Nr. Malton |
| Ralph " | 22 | Son | Cotton Worker | Hawes |
| Margaret " | 17 | Dau | " | Buckden |
| Jane " | 14 | Dau | " | Buckden |
| Mary " | 12 | Dau | " | Kettlewell |
| Ann A. " | 9 | Dau | " | Starbotton |
| Elizabeth " | 6 | Dau | | Starbotton |
| John " | 4 | Son | | Starbotton |

Who is Ralph METCALFE ?

Searching for the birth of Ralph METCALFE, proved to be a problem, I could not find one. What I did find, was a Baptism for a Ralph RYDER on 10th August 1828 in the Parish of Coverham, the illegitimate son of Elizabeth RYDER, a servant. Also, strangely, I found a Baptism for Ralph RYDER at Hawes, giving the exact date and parentage. In conclusion, Ralph may not be a METCALFE but he was very much part of the METCALFE Family.

1841 Census - the Parish of Kettlewell.

A second viewing of the Census revealed there was another RYDER Family, consisting of: Jane RYDER aged 55, John aged 25, Ralph aged 12 and Jane aged 1 year.

Research of this family, confirmed that Ralph RYDER aged 12 was living with his Grandmother Jane. John aged 25 is Jane's son. Baby Jane is the illegitimate daughter of Mary RYDER, and Jane's Granddaughter.

1861 Census for Little Marsland, Lancashire.

The METCALFE family, plus Robert and Margaret RODGERS along with their growing family have relocated, probably prompted by the wealth of work available in the thriving Cotton Mills of the area.

The METCALFE family -

| | Age: | | Occupation: | Place of Birth: |
|---------------|------|------|--------------|-----------------------|
| John METCALFE | 62 | Head | Ag. Labourer | Buckden |
| Betsy " | 52 | Wife | | Scampston, Nr. Malton |
| Jane " | 24 | Dau. | Weaver | Buckden |
| Elizabeth " | 16 | Dau | " | Starbotton |
| John " | 14 | Son | " | Starbotton |

and

| | | | | |
|------------|----|----------------------|--|-----------------------|
| Jane RYDER | 77 | Widow, wife's mother | | Scampston, Nr. Malton |
|------------|----|----------------------|--|-----------------------|

Genes of my two combined METCALFE families, the RODGERS and RYDER families have travelled through history to their many descendants, and to the surprise!

~~~~~

### My 3 x Gt. Grandparents -

Robert RODGERS a Miner, and Margaret METCALFE married at Linton-in-Craven on 10th March 1855. The Witnesses - George SCOTT and Mary METCALFE.

Ralph RYDER a Servant, and Maria DUCKETT married at Burnsall on the 4th October 1856. The Witnesses - George SCOTT and Jane METCALFE.

(The couple's father's names were not listed, at the date of their marriage they were both living at Ramsclough, a farm on the outskirts of Burnsall).

Just for interest, I researched Ralph and Maria's family. They had 8 children, sadly only 3 lived to adulthood. Their youngest surviving daughter Maria RYDER, born in 1870, married Arthur TINDALL at Skipton on 18th January 1894.

And the surprise, of course, the name TINDALL was very interesting. Arthur and Maria TINDALL are the Gt. Grandparents of Michael James TINDALL, well known for his International Rugby career, and his marriage to Zara PHILLIPS.

Recently, I received the results of a DNA Test via 'Ancestry'. What a revelation, I just wanted to know my ethnicity. The 50% DNA from maternal side is mostly English, with a small percentage of Scottish and Scandinavian. On my paternal side, mostly English, but 13% Irish, a complete mystery!

It was the DNA 'Matches' which revealed many descendants within my 2 combined METCALFE families, the RODGERS and RYDER families I found really unbelievable, but understandable as so many individuals are taking the 'Test'. One 'Match' in particular, to a 4th Cousin, includes a Family Tree showing he is directly descended from Ralph and Maria RYDER.

DNA is so interesting, and a wonderful addition to Family History. I would be very pleased to hear from fellow members who share these families. I have scoured the Birth Brief Book and perused every new member's history, to no avail, is there anyone out there?

Christine A. Crossley - M0557

## What's in a Name

During the 1890s, the idea of establishing the single country, now known as Australia, was a live debate among the various British colonies in the 'Great South Land' — New South Wales, Tasmania, Victoria, Queensland, South Australia and Western Australia. Initiated by the native-born, debate waxed and waned, and even included New Zealand for a while. These two given names reflect the commitment of two Metcalf/e families to the emerging new order.

John Federate Metcalf was born in Eaglehawk, Victoria, on 27 July 1899, one of six children of native-born Robert and Grace (Tregoning) Metcalf. He was part of an extensive mining family based on three brothers from Cumbria who arrived in Eaglehawk in the 1860s. Fred Metcalf, as he became known, went on to have a career as a footballer with the North Melbourne Australian Rules football club from 1925–27. He died in Melbourne on 10 May 1975.

The second name was conferred on a boy born on the official birthday of Australia, 1 January 1901. He was Henry Norman Commonwealth Metcalfe, born in another gold mining area, Gympie in Queensland, to John James Metcalfe and his wife Minnie (Bentley). Henry was descended from miner Cornelius Metcalfe who came from Co. Durham and married in Gympie in 1869. Norman died in Queensland on 20 Jul 1974.

Bernard Metcalfe, M0221

## Facebook Link to Secret Yorkshire

This page has some wonderful photos! Facebook Link <https://www.facebook.com/secretyorkshire>

## Now Then 13

In previous articles written in the 'Now Then' series, I have tried to explain how, on a person's death, their assets would be distributed in accordance with their will or, if they made none, rules of intestacy. Additionally, I have explained what kind of records may be available for us to research, with particular reference to Metcalf(e)s, as well as where they might be accessed. In this article I am going to enlarge on two lesser known indexes and explain further the role of the church courts.

I am conscious too that I have not dealt, so far, with what happened when there were disputes between warring members of the family or next of kin. I hope to put this right in the next article, bearing in mind that we are hoping to have a talk at our forthcoming Muster by an archivist at the Borthwick Institute in York (BI) who we hope will enlighten us about the church's 'Cause Papers' held by them, some of which include testamentary disputes.

The vast majority of wills which we find and use were proved in "common form" in the ecclesiastical courts prior to 1858. Indeed it remains the case today that where wills are proved in the probate registry the non-contentious probate rules 1987, as amended in 2018, set out the normal processes of proving a will in common form where there are no disputes.

### THE COURTS

As I have previously written, from the reign of William the Conqueror, the ecclesiastical courts and their canon law procedures were recognised by the state. By the 14th century the church courts were accepted as the appropriate court in which to prove a will or obtain the appointment of an administrator, where there was no will.

By 1858 when the ecclesiastical courts ceased to be involved in the administration of probates and letters of administration, it has been estimated that there were more than 200 church courts which dealt with these procedures. I have previously explained why and how the church courts handled the affairs of deceased persons and their wills or intestacy following their death but further elaboration of some matters might be helpful.

By way of a brief reminder, there was in effect a pyramid structure of ecclesiastical courts. At its foot were the courts of an archdeaconry. Above them were the diocesan courts of the bishops and at the top of the pyramid the prerogative courts of the primates of Canterbury and York. Some parishes, having their own courts, were outside this structure, beyond the archidiaconal and episcopal jurisdiction, being called 'peculiar'.

The excellent short book (ISBN: 978-1-906280-55-0) entitled "Probate Jurisdictions: where to look for wills" written by Jeremy Gibson and Stuart Raymond and published in its several iterations by the Federation of Family History Societies (FFHS) and latterly the Family History Partnership (itself absorbed now in FFHS Family History Books) should be consulted to ascertain which courts might be relevant and where their surviving records are located. Follow this link [Probate Jurisdictions: Where to Look for Wills by Jeremy Gibson & Stuart Raymond](#).

For a scholarly and clear exposition on the workings of the church courts you can do no better than reading the work by Dr Colin R Chapman, variously titled in its three editions 'Ecclesiastical Courts, their officials and their records', 'Sin, Sex and Marriage: Ecclesiastical Courts, officials and records' and most recently 'Ecclesiastical Courts, officials and records: sin, sex and marriage' published by Lochin Publishing (1992 and subsequently). The latter two are the most recent editions of the same book.

The National Archives (TNA) book entitled 'WILLS & PROBATE RECORDS a guide for family historians' by Karen Grannum and Nigel Taylor (2009) 2nd edition is an excellent guide to the

probate records held by the TNA and describes very fully how and why the records were generated by the courts in the UK.

Mark Herber's 'Ancestral trails' published by Sutton Publishing for the Society of Genealogists (SoG) a mighty tome on all the records one may discover and need to understand during one's exploration of family history has very useful chapters on wills and the probate processes in the church court and is highly recommended too. It is my 'bible' or encyclopaedia even though my copy is now 25 years old

Which court was used depended generally on where the deceased's assets were located.

If they were all in one archdeaconry, then that court would deal with the will or intestacy.

If, however, assets were situated in more than one archdeaconry, then the handling of the administration would be passed to the diocesan or bishop's court (sometimes called the consistory court).

When the value of the assets in the estates was 'substantial' (in 1540 terms) then these were called 'bona notabilia', estates: being worth over £5 in the northern province and £10 in the southern province, as to which see below.

Before 1604, the Archbishops in both provinces claimed the exclusive right to administer estates when the deceased had goods in more than one diocese. A canon law of that year enacted that where an application for a grant was made, executors and intending administrators, along with the witnesses who witnessed the signing of the will, had to swear whether there were assets in more than one diocese, and state the value. If there were goods of the appropriate value in more than one diocese then within 40 days the case would be referred, automatically, to the archbishop's prerogative court in York or Canterbury.

See below FIG 1 for the will of Robert Metcalf of Rigg House Hawes who died on 1851. His will was proved in common form [as to which see further above] on the basis of the oaths of the executors that the value of the estate in the Archdeaconry were under the value of £1,500.

As the estate was within one archdeaconry, namely that of Richmond, it was proved there. Had he owned assets in more than one archdeaconry or diocese the will would have been proved in the PYC as the value was in excess of £5.

The court officials on the left hand margin of the book annotated details of the date 29th May 1851 that the executors were sworn and their names (Ann and Edward Metcalfe). The date of Robert's death is also noted (12th April 1851).

For those who have access to Ancestry online, the court papers in the Archdeaconry of Richmond archives are available as they have been digitised for the West Yorkshire archives who hold the archives.

## THE PROVINCES AND THE PREROGATIVE COURTS

The church was divided into two administrative provinces, under the control of the two archbishops. The northern province, (PCY) under the jurisdiction of the Archbishop of York, comprised the counties of Cheshire, Cumberland, Durham, Lancashire, Northumberland, Nottinghamshire, Westmorland and Yorkshire.

The other counties of England were within the jurisdiction of the Archbishop of Canterbury whose court (PCC) was actually located in London, not Canterbury.

The Channel Islands were under the jurisdiction of the archbishop of Canterbury and the Bishop of Winchester. Some wills for Jersey and Guernsey therefore might be found in the PCC prior to 1858.

Wales was within the jurisdiction of the Archbishop of Canterbury (PCC), apart from a small part of Flintshire, which was within the diocese of Chester and therefore exceptionally was held to be in the northern province at York.

The Isle of Man was in the Diocese of Sodor and Man and within the Province of York.

The archives of the PCY are held by BI and their indexes can be researched online with FMP, as well as the BI itself. See this link [How to search our online catalogues - Borthwick Institute for Archives, University of York](#) for details of how to search their catalogue. You will need to complete a form when you have identified the records you need to see and pay the requisite fee to the BI.

The archives of PCC are held by TNA. See especially record series PROB 11 for the registered copies of wills and administrations granted by the PCC. This link takes you to their most helpful online guide: [Wills 1384-1858 - The National Archives](#) .

One effect of the fact that the values of bona notabilia never altered was that due to inflation, by the 18th and 19th centuries, the value of £5 and £10, respectively, was greatly reduced and so many more testators' wills were proved in the two prerogative courts than hitherto.

As an aside, where a deceased died overseas the PCC claimed standing and proved the will, although PCY did also deal with wills of those dying abroad but with roots in the northern province.

FMP have a number of indexes for locating wills and testamentary documents and it is worthwhile trying to access this paying site.

If you select 'Shortcuts for searches' the tab for BIRTH MARRIAGE DEATH AND PARISH RECORDS IN UK, then look at the list on the left hand side of the records available you will discover that at the foot, there is a section headed WILLS & PROBATE. By clicking on that the search page is opened filtered to cover items under that heading. Type in the surname you want to search (probably permitting variants) and about halfway down the page you will find the heading RECORD SET with to the right a link entitled Browse record set. If you click on that you open a list of the various records on the FMP site related to the subject headed 'Filter by Record set'. It is a long list.

The first set is Bank of England Wills extracts: 1717-1845.

#### BANK OF ENGLAND REGISTERS AND EXTRACT WILLS

From 1717 until 1845 the Bank made extracts of wills produced to them, in connection with investments registered with the Bank, such as Consols and other forms of what we might call government stocks or gilt edged securities. Individuals would lend money to the government in return for an agreed rate of interest, the loan being repayable at a certain date or sometimes with no date fixed for repayment (redemption).

The Bank issued stock certificates to evidence the loan and maintained registers for each security, stating who lent what and when. If the investor (lender) died the Bank needed to know who was entitled to be repaid the stock following the death and to whom in the interim the interest was to be paid and where. The stock was transferable from the deceased's name to legatees or executors.

For deceased investors the Bank created Registers and included abstracted extracts of wills which contained legacies of the stock or, if there were no legacies, the terms on which the residue

passed. From 1717 until 1807 there were 27,500 abstracts and from 1807 until 1845, 31,000 abstracts, meaning a total number of 60,000 plus extracts of wills in their registers.

The original registers with their abstracts were donated to the SoG, who published an index to the series from 1807 to 1845 in book form and microfiche. More recently all registers have been indexed and digitised by FMP, hence why the registers, from inception to 1845 are listed on their site.

The Bank of England insisted in 1812 that anyone who held government loans or annuities managed by them had to have their will proved in the PCC and they refused to recognise grants issued by any other court.

The indexes list the deceased and their last address, the Stock held, the date of the will and any codicil, the name of the executor(s) and their address(es), an extract of the appropriate legacy in the will, together with the date the will was proved and where. In a marginal note to the left of the extract of the will further biographic details of the beneficiaries might be found including their age or death or marriage, or the date of death of an executor.

See an example page in FIG 2 below of annotation of a widow's death.

A search on FMP against 'Metcalf' and variants, produced 20 entries, which included the identity of relatives of the deceased family, in their capacity as beneficiaries or executors.

See FIG 3 below for an example of an entry in the Bank of England's Registers against the late JOHN METCALFE who lived overseas in Hamburg, owning £1,500 worth of stock, appointing his brother CHARLES one of his executors and naming his sister ALICE BURROWES and his nephews and niece as legatees. JOHN lived in 1751 in Hamburg but appears to have died in Grunhoff in the Dutchy (sic) of Lanenburgh. As he died overseas the PCC proved his will.

The Bank's Registers additionally included details of court orders against account-holders or annuitants who became lunatics or bankrupts so that the bank could account to the proper authorities.

A search against Metcalf(e) did reveal one entry for a luckless THOMAS METCALFE of Ripon who was found to be a lunatic. An order was made by the court of chancery in November 1822 requiring the Bank to transfer his stock to the accountant general of the court of chancery to be held on Thomas' behalf. The entry in the register follows on and precedes others relating to extracts of wills so there was no distinction between the reasons for registering entries. To see the entry see FIG 4 below.

In the Banks' Registers reference is often made to the wills being proved in 'Doctors' Commons'. The building so named was rebuilt in 1670-1672 after the fire of London in 1666 and included a courtroom which was used by the PCC as well as the consistory court of the Bishop of London and the appellate Court of Arches the latter being the subject of the next article! So the name Doctors' Commons was a shorthand name for the PCC prerogative court.

### SEAMEN'S WILLS and the PCC

Until 1815, the wills of seamen 'dying overseas' had to be proved in PCC, despite the fact that their assets were less than £5 or £10.

Many poor seamen's wills were proved in PCC and it is worthwhile checking if a naval ancestor died overseas and if his will is proved in the PCC. After 1815 a seaman with wages of less than £20 owed to him, could have their will proved in a local church court rather than PCC.

One of the record sets on FMP referred to above includes Seaman's wills where they died overseas. I have checked on FindmyPast (FMP) to see if there are any Metcalf(e) seamen's wills proved in the PCC but could not find any. You might have better luck! It might though be useful for other families you are researching.

A search of Royal Naval and Marine wills on the TNA Discovery site (See link here [Wills of Royal Navy and Royal Marines personnel 1786-1882 - The National Archives](#)) did however result in 3 entries. These are in the Admiralty records not PROB and are not the same records on FMP as I see it.

I quote from the TNA guide:

"The wills usually provide the following information:

- the man's name
- the date the will was made
- the man's rank
- the last ship he served on
- details of his effects
- the name (and sometimes the address) of the person who was to receive the effects in the event of his death (usually his next of kin)

As well as being signed and dated by the testator, wills were usually signed by the master and captain of the ship that the seaman or warrant officer was serving on when the will was made.

These wills also hold details such as the name, address and occupation of the executor."

The entries are for

|                                                           |         |
|-----------------------------------------------------------|---------|
| WILLIAM METCALFE on the ship ASIA (ref ADM 48/64/35)      | in 1802 |
| JOHN METCALF on the ship VETERAN (ref ADM 48/60/24)       | in 1793 |
| JAMES METCALF able seaman on ship AIGLE (ref ADM 48/62/4) | in 1798 |

## ROLE OF THE CHURCH COURTS

The role of the church courts was to satisfy themselves whether or not the will produced by the executors was valid. Had it been signed by the testator/rix? Was it validly witnessed? Was it authentic or had it been forged? Was the testator/rix of sound mind capable of appreciating what a will was, in other words did they have testamentary capacity? In wills it would regularly be stated '.....being sicke of body but of good perfect memory', in other words he or she knew what they were doing! They had the ability to make the will.

The courts would also consider and determine complaints by legatees that they had not been paid what was due to them under the terms of the will. In other words neglect or mismanagement by the executors.

In the case of individuals dying with no will then there might be issues over who was the next of kin. Was the appropriate individual seeking the grant of letters of administration? Did someone have a better right?

In previous articles I explained how the executors would depose (swear in an affidavit) that the document produced to the court was the last valid will of the deceased and confirm who they were.

When an application for a grant of probate of a will was produced, the court would check the points mentioned above before deciding whether, or not, they would allow the will to be proved and to grant of probate to the executors. In doing this the courts would often ask for affidavits, for

example from witnesses to the effect that they had seen the testator/rix sign the will in their presence; or details of relationships between the various next of kin might be requested in the case of intestacies.

It is noteworthy that once the probate process had been completed and a grant issued, an executor could pay a fee to have a copy of the will entered into what was called the Probate Register. In the PCC the registers commenced in 1383 and continued until 1858. In the PCY the registers commenced in 1389 and continued until 1858 although there are a large number of gaps in the 15th and 17th centuries. These were large bound ledgers into which copies of the wills were written page by page. These transcriptions would be written by a Clerk and of course would not include the original signatures or seals of the Testator. The latter will only be found on the original will.

Some executors did not pay to have the wills copied into the Probate Register and therefore there will be no entry in this Register. It is possible that the original will may not have survived, perhaps having been handed over, as was the norm, to the executors along with the grant of probate sealed by the court.

Another record book used by the church court was the Probate Act Book and this might give details of the will and can be searched as an alternative.

The Probate Act Book was in effect a diary or daily record of court business. It included the church court's record of the initial grant of probate or letters of administration with the will annexed, if that was relevant. When the grant of probate was issued it would be recorded, on the original will, to that effect and the court would usually have retained it if the original will was not handed over. A record of the grant of probate would then be entered in a transcription into the Probate Act Book. This would also show the date when an inventory had been supplied to the court by the executors, prior to the middle of the 18th century. It seems highly probable that the inventories were themselves used in establishing the amount of fees payable by the executors to the ecclesiastical court.

It should not be forgotten that the value of the estate was that of the personal estate of the deceased and that it would not include freehold land.

In the absence of the original will or a registered copy of it then an entry in the Probate Act Book might be the only reference you will find to there being a will. The Probate Act Book would also include details of letters of administration issued to next of kin.

Probate Act books for the northern province date from 1502 until 1858, although the earliest surviving book is that of 1587. There are gaps in the 16th and 17th centuries so the series is not complete. Prior to 1502 all the archbishop of York's business is found in the Probate Act Books of the York City Deanery. The originals are in the BI.

In the southern province of Canterbury the Probate Act Books date from 1526 and in this province the initial applications for a grant lodged with the court might have survived too and you may be able to see the executor's signature as well as possibly, the date of the deceased's death. As it was quite expensive and difficult to reach London where individuals were living in the country, most executors in the north would use a local court officer (called a 'commissary') to take their oath which would be forwarded to London, thereby avoiding a long journey south.

Executors had to complete, as indeed they do now an affidavit (now no longer sworn so called a statement of truth). These oaths are held in the National Archives for the PCC under reference PROB 52 for the period 1796 - 1858 And in PROB 56 for the period prior to 1796. They are useful as a guide to the place of residence of the executor.

To conclude the consideration of where a will might be proved it should not be forgotten that in some dioceses there were courts called 'peculiars'. They were not subject to the authority of a bishop and peculiars had their own ecclesiastical courts which dealt with the granting of Wills and grants of administration.

David Lambert M0011

FIG 1. – will of ROBERT METCALFE 1851 -ARCHDEACONRY OF RICHMOND

(Copyright of West Yorkshire Archives and Ancestry acknowledged)

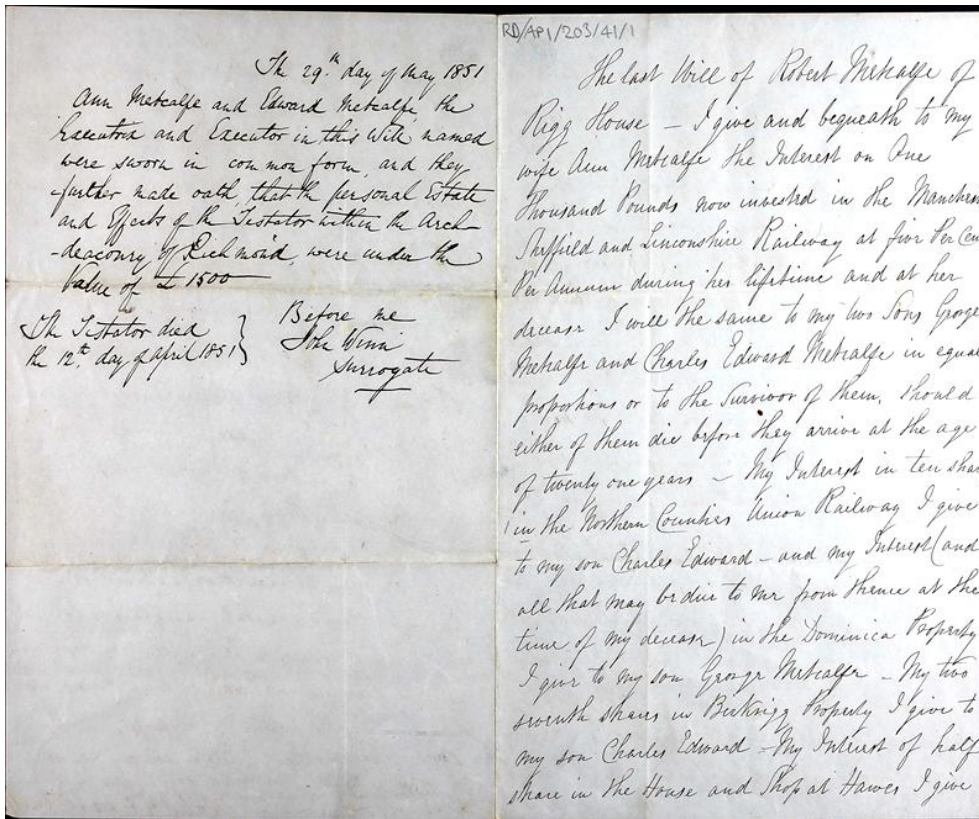


FIG 2 Bank of England Register entry for JOHN METCALF who died 1803 with annotation in left hand margin of death of his widow SARAH METCALF in 1822. (copyright of FMP and SoG duly acknowledged )

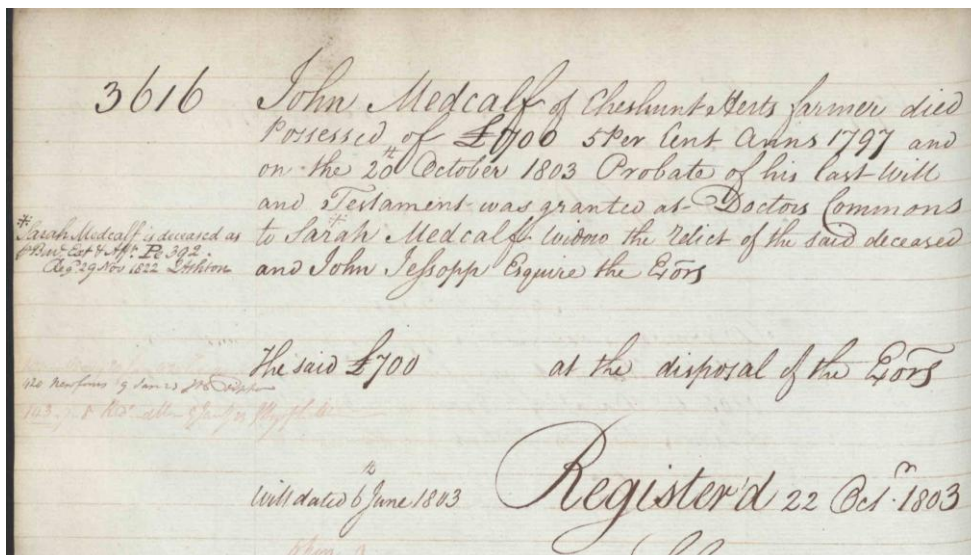


FIG 3 Bank of England register entry for JOHN METCALFE of Hamburg. (copyright of FMP and SoG duly acknowledged)

First Feb 1310.

Mem. That John Metcalfe of Hamburg Gent (in the Will of Agnes his wife the Dutchess of Saxe-Gotha in the Probate of the City of Hamburg, but as Spinster in the Dutchess of Saxe-Gotha) died at Hamburg in the Dutchess of Saxe-Gotha in the Year 1751. And by his last Will and Testament with a Codicil did appoint his Brother Charles Metcalfe and John Hamburg Executors of his said Will in which are the Words following Viz.

"I bequeath unto my dearly beloved Brother Charles Metcalfe my House, Goods, Household and all my Linnen Furniture, and all Moving Goods, Further I bequeath unto him all my Estates either in Stocks, Bonds, Goods and all Outstanding Debts, Out of which it is my Will and desire that he will pay the following Legacies as follows To my dearly beloved Sister Alice Burrows the annual Dividend of One Thousand Pounds of Capital Bank Annually during her natural Life to be transferred on her Name and after her decease the said Capital Stock of One Thousand Pounds Sterling to be equally divided between her three Children my Nephews John Burrows, James Burrows and my Niece Alice Burrows."

This being all the Mention made of his said Will the £1500 are at the disposal of the Executors as there is no particular mention of what part of the said Bank Ann. are in

The Will dated the 23 April 1751, Probate dated at Doctors Commons 17 July 1751  
Regd the 6<sup>th</sup> August 1751 Stonehouse

394

FIG 4 ENTRY FOR THOMAS METCALFE of RIPON a lunatic. (copyright of FMP and SoG duly acknowledged )

There are the Sums of

|           |                  |                                                  |
|-----------|------------------|--------------------------------------------------|
| for 24325 | £ 10153 . 1 . 10 | three p Cent Reduc <sup>d</sup> Ann <sup>l</sup> |
| 24650     | 1000             | three p Cent Cont <sup>d</sup> 2 <sup>d</sup>    |
| 24059     | 4 2625           | New four p Cent Ann <sup>l</sup>                 |

standing in the Name of Thomas Metcalfe of Ripon Yorkshire Esquire, who is become a Lunatic

1000 Cont<sup>d</sup> 2<sup>d</sup> 1722  
1000 Cont<sup>d</sup> 2<sup>d</sup> 1722  
2625 Reduc<sup>d</sup> 3<sup>d</sup> Decem<sup>r</sup> 1722

as appears in an Order of the Court of Chancery dated the 19<sup>th</sup> Novem<sup>r</sup> 1722 and by which It is Ordered that The Accountant general, Secretary & Deputy Secretary of the Bank do transfer the said Annuities into the Name of the Accountant General of the Court of Chancery In Trust in this Matter & do receive the Dividends (if any) due & pay the same into the Bank on the Credit of this matter

Order with the Accountant

By 3930 3 Decem<sup>r</sup> 1722 J White

Asols Reverend Miles Moor of Rayleigh  
in S. H. Essex Died possessed of

## Events

**We're going LIVE on Saturday 23rd August 2025**



**PRONI**  
Public Record Office  
of Northern Ireland

**LIVE**  
**in 2025**  
More Details Soon

Friendly **FAMILY HISTORY SOCIETIES**, Knowledgeable **SPEAKERS** and **MORE!**  
**PRONI - 2 Titanic Boulevard Titanic Quarter, Belfast BT3 9HQ**

---

### **Bath & Avon FHS Family History Fair**

10:00am 13th September, 2025 Thornbury

To be held on Saturday 13 September 2025 at Turnberries Community Centre, Thornbury. More details to follow.

Check for updates [here](#).

---

### **Peak District Family History Conference**

6 September 2025

The Peak District Family History Conference for 2025 will be, once again, held at the Palace Hotel, Buxton, Derbyshire on the 6th September 2025.

[Visit website for more information.](#)

---

### **Oxfordshire FHS Family History Fair 2025**

October 25, 2025 10:00 AM - 4:00 PM at Cherwell School (North Site)

We are pleased to say that we will be holding our own family history fair in 2025. It will take place on Saturday 25th October at the Cherwell School, Oxford. More details of stallholders etc. will be posted on the [information page](#) from time to time.

## New Member Birth Briefs

We have had a number of new members in the last few months and some of them have been very quick off the mark in sending in their Birth Briefs. However, there are still a number of outstanding BB's which we have not received. These briefs are very important to the Society both in extending family tree information and building up links between members, but also in collecting and passing on information for your family that may not be available elsewhere. When the Society started up, members went round the archive centres and registry offices in the UK, and since then, we have added many records from other sources. Our original records are as accurate as can be as they were collected with care and attention to detail, which is something that cannot always be said of some other sources. Each Brief helps us to build up a picture of the family's location, movement and occupation as well as the nitty gritty of the family dynamic – so they are all extremely important.

We are currently missing Birth Briefs from M2221, M2225, M2226, M2228, M2234, M2237, M2240, M2241, M2242, M2243 & M2245. If your membership number is listed here, please do send in your Birth Brief as it all adds to our knowledge about the family. If you have sent it in, please let us know by emailing [membership@metcalfe.org.uk](mailto:membership@metcalfe.org.uk)

### Birth Briefs:

2248 Mrs Julie Dinsdale

G-dau of Norman Jannings & Kathleen Mary Mte m 16/03/1935 Ilkley. Kathleen Mary b.17/07/1956 Burley in Wharfedale dau. of Edwin Mte & Mary Westerby m. 03/12/1902 Shipley. Edwin b. 30/03/1873 Bingley, s. of Thomas Mte & Alice Butler m. 18/06/1931. Thomas b. 03/08/1848 Stainforth, s. William Mte of James Mte & Mary Brown m. 12/02/1850 Linton in Craven. James b. 11/02/1827 Giggleswick, s. of William Mte & 1<sup>st</sup> wife Hannah Marsden, m. 14/10/1826 Clapham. William b 7 Oct 1801 Selside natural son of Jane Mte.

Conn to M4 M11 M41 M46 M52 M90 M135 M195 M246 M466 M731 M790 M1827 M1877 M1879 M1943 M2036

2249 Mr Steve Whitehead

Hannah Mte bpt.06/02/1736 m John Yeadon Lorimer 30/10/1760. Hannah d. of John & Sarah (Proctor) Mte m 28/04/1736 Fewston. John bpt 02/05/1711 Thornthwaite son of Thomas & Mary (Holmes) Mte m 06/05/1708 Hampsthwaite. Thomas bpt 18/10/1676 Hampsthwaite son of John & Jane (Atkinson) Mt m 09/06/1669 Hampsthwaite. John bpt 20/02/1651 Hampsthwaite s.o John & Jane Mt. John bpt 08/08/1624 Hampsthwaite son of John & Dorothy (Beecroft) Mt m 18/11/1618 Hampsthwaite.

Conn to M48



## **The Metcalfe Society Annual General Meeting and Muster Saturday 4<sup>th</sup> October 2025**

This meeting will be to celebrate the 45<sup>th</sup> Anniversary of the Society, so we hope as many of you will attend the live event as possible at Tennants Auction House in Leyburn

So far we will be having presentations by a variety of speakers. The speakers include:

A speaker from the Borthwick Institute at York University discussing the Cause Papers they hold as well as other items in their archive.

Anne Giller, Sheffield Family History, talking about the development of Surnames

There will also be a presentation on accessing the website, and we are waiting for confirmation from other speakers.

We expect to open the day at 9.30 am BST, starting the meeting about 10.00 BST. We will break for lunch and attendees can either bring their own lunch or visit the café/restaurant at Tennants. Specific details of the timing will be available in the next newsletter. We have still to confirm whether or not there will be an online element to the meeting, so look out for details in the next few months.

Following the success of the 'Where do I go from here?' last year, we hope to run a second session along the same lines to help you break down those barriers and brickwalls we all come across from time to time. Jackie Depelle, who will be well known to many of you, has agreed to be part of this session again. It will be in the form of question and answer – so if you have specific problems, do let us know so we can make sure we can give you the best answer. All timings above are British Summer Time.

The Application form to join us at the AGM and Muster is available below with details of the timings to be finalised in the next newsletter. In addition, if you are unsure as to whether you will be able to join us, but would like to take part in any voting that occurs, you can return the Proxy Voting form to the address below.

We look forward to seeing you there online.

The Metcalfe Society Committee



**The Metcalfe Society**  
**Registered Charity no. 1000879**  
**45<sup>th</sup> ANNUAL GENERAL MEETING**  
**Saturday 4th October 2025**

**AGENDA**

1. **Chairmans opening remarks**
2. **Apologies for absence**
3. **Minutes of the AGM 2024**
4. **Matters arising from the previous Minutes**
5. **Presentation of Accounts for 2024-2025**
6. **Appointment of the Independent Examiner**
7. **Subscription for 2026**
8. **Reports: Executive reports for:**

|                   |               |                   |
|-------------------|---------------|-------------------|
| Trustees          | Treasurer     | Membership        |
| Database Keeper   | Social Media  | Newsletter Editor |
| Overseas Liaisons | Wills Project |                   |

Affiliated Groups, FHF (+ North West & York's Groups), GOONS

9. **Elections:**

The current Trustees are willing to restand:

- |                                  |                |
|----------------------------------|----------------|
| i. Chair                         | Jo Heron       |
| ii. Treasurer                    | Vacant         |
| iii. Database Keeper             | David Metcalfe |
| iv. Committee Member & President | David Lambert  |

**Extended team:**

- |                       |                                               |
|-----------------------|-----------------------------------------------|
| i. Secretary          | Vacant                                        |
| ii. Archivist         | Liz Waller                                    |
| iii. DNA project      | Martin Metcalfe                               |
| iv. Social Media      | Lesley Longworth                              |
| v. Overseas Agents    | Dianne Fox (Australia), Susan Harper (Canada) |
| vi. Committee Members | Ella Burton                                   |

10. **Any Other Business**

11. **Date of the 2026 AGM**

Minutes and reports to follow in the next newsletter

Programme details will follow in the next newsletter



# The Metcalfe Society

## ...for the name, history, heritage & genealogy

Dear Member



**EARLY BIRD OFFER**



The AGM and Muster will be held at Tennants, Leyburn, on **Saturday 4<sup>th</sup> October 2025**.

We are intending to hold the meeting live this year, and following a discussion with the venue, we may be able to hold an online section to the meeting. Final details will be available later but if you wish to get ahead, we are offering an early bird booking fee.

The Annual General Meeting will be free of charge

The charge on the day will be £12.00 per head, to cover refreshments and speakers expenses, however, if you wish to get ahead of the crowd, the **Early Bird** discount reduces the fee to £10.00 per head – this applies to both members and visitor alike. The same charge will apply whether live or online sessions are joined. If you wish to take advantage of this offer, there are a number of ways to pay:

- a. by cheque to the address below,
- b. through Paypal
- c. Family History Federations's Parish chest at <https://www.parihchest.com/society-subscriptions-2494.php> before 1<sup>st</sup> October 2025.
- d. Those of you who pay your subscription by Standing Order already have the details of the bank account and you can pay that way.

If you still not happy about any of the above, please contact [membership@metcalfe.org.uk](mailto:membership@metcalfe.org.uk) to ask for the bank account details.

Some of you have not given us an email address, or otherwise may not wish to join online, so to ensure that you can still have your say, we are offering you the chance to vote through the post on agenda items by appointing the Chairman your proxy. The proxy form is attached below and means that you can register how you would wish to vote on those items where a vote is to be taken - as if you were able to attend in person.

Please note that you can send in a proxy form at any time up to the date below, but if you are able to attend the meeting live or online, your proxy vote will not be counted. Either complete your details and vote in the spaces provided below and post to 17 Bailey Walk, Wakefield, WF4 3QW or scan and email to [membership@metcalfe.org.uk](mailto:membership@metcalfe.org.uk)

**PLEASE COMPLETE DETAILS BELOW, SIGN AND RETURN BY 27<sup>th</sup> September 2025.**

**I WOULD LIKE TO REGISTER FOR THE AGM AND MUSTER.**

**NAME:** ..... **MEMBERSHIP NO:**.....  
**ADDRESS:** .....  
**EMAIL ADDRESS:** .....  
**SIGNATURE:** .....

**SOME FURTHER DETAILS OF THE AGM.**

This part of the form is for use by those who will not be participating on the day. By signing the proxy, you will be counted as being 'present' for the purposes of the quorum and to be in attendance at the meeting. You are asked to indicate a voting preference on those proposals which require a vote. You can still give the chairman a proxy but allow her to vote as she sees fit if you wish. To do that you should **not** tick any of the preference boxes.

**PLEASE COMPLETE DETAILS BELOW, SIGN AND RETURN BY 27<sup>th</sup> September 2025 to Jo Heron 17 Bailey Walk Wakefield WF4 3QW or email a scanned signed copy to membership@metcalfe.org.uk**

**NAME:** ..... **MEMBERSHIP NO:**.....  
**ADDRESS:** .....  
**EMAIL ADDRESS:** .....  
**AND/OR PROXY (CONSENT SIGNATURE):** .....

**TO VOTE, TICK THE BOXES AS PREFERRED. THE CHAIRMAN WILL HOLD YOUR PROXY TO VOTE UNTIL NECESSARY.**

| ITEM | SHORT DESCRIPTION                   | VOTE FOR | VOTE AGAINST |
|------|-------------------------------------|----------|--------------|
|      | Approval of Minutes                 | [ ]      | [ ]          |
|      | Recommended subscriptions           | [ ]      | [ ]          |
|      | <b>Elections:</b>                   |          |              |
|      | Chairman: Jo Heron                  | [ ]      | [ ]          |
|      | Treasurer: Vacant                   | [ ]      | [ ]          |
|      | <b>2 other officers:</b>            |          |              |
|      | David Lambert (Trustee)             | [ ]      | [ ]          |
|      | David Metcalfe (Trustee & database) | [ ]      | [ ]          |
|      | Appointment of Independent Examiner | [ ]      | [ ]          |
|      | Acceptance of reports               | [ ]      | [ ]          |

## Society Officers & Contact Details

President: Mr. David Lambert, M0011, email: [d22lam@hotmail.co.uk](mailto:d22lam@hotmail.co.uk)

Vice-president: Peter Dobson, M0069, email: [21willp8@gmail.com](mailto:21willp8@gmail.com)

### Trustees

Chair: Mrs. Jo Heron, M1042, email: [chairman@metcalfe.org.uk](mailto:chairman@metcalfe.org.uk)

Database Index: Mr. David Metcalfe, M0046, email: [database@metcalfe.org.uk](mailto:database@metcalfe.org.uk)

Trustee: Mr. David Lambert, email: see above

Trustee: Dianne Fox, M0113, email: see below

### Extended Team

Membership, Enquiries & Sales: Mrs. Jo Heron, emails: [membership@metcalfe.org.uk](mailto:membership@metcalfe.org.uk); [enquiries@metcalfe.org.uk](mailto:enquiries@metcalfe.org.uk); [shop@metcalfe.org.uk](mailto:shop@metcalfe.org.uk)

DNA Project: Mr. Martin Metcalfe, M0772, email: [dna@metcalfe.org.uk](mailto:dna@metcalfe.org.uk)

Membership & Enquiries Assistant; Mrs. Liz Waller, M1189, email: [committee1@metcalfe.org.uk](mailto:committee1@metcalfe.org.uk)

Facebook Co-ordinator: Mrs. Lesley Longworth, M0068, email: [committee1@metcalfe.org.uk](mailto:committee1@metcalfe.org.uk)

Newsletter Editor: Susan Harper, M0266, email: [editor@metcalfe.org.uk](mailto:editor@metcalfe.org.uk)

Overseas Agents: using e-transfer or cheque made out to agent's name

Australia: Dianne Fox, 20 Old Eltham Road, Lower Plenty, Victoria, Australia 3093, email: [agentaus@metcalfe.org.uk](mailto:agentaus@metcalfe.org.uk). Note that e-transfer email will be different. Please confirm.

Canada : Susan Harper, 820 Rogers Crt, Victoria, BC, Canada, V8X 5L4, email: [agentcdn@metcalfe.org.uk](mailto:agentcdn@metcalfe.org.uk). Note that e-transfer email will be different. Please confirm.

**Please note this Alternate Join/Renew option at:  
the [Parish Chest, Society Subscriptions](#)  
using your credit card.**

I hope you have enjoyed reading this newsletter. If you have any comments, research questions or articles you wish to contribute, please contact [editor@metcalfe.org.uk](mailto:editor@metcalfe.org.uk)

If you use social media, please 'like us' on [Facebook](#) to keep up to date on our news and events.

Our website: <http://www.metcalfe.org.uk>

Email: [membership@metcalfe.org.uk](mailto:membership@metcalfe.org.uk) | Telephone: +44(0) 1924 260926

Post: The Metcalfe Society, 17 Bailey Walk, Wakefield, West Yorkshire, WF4 3QW, UK

© 2025 The Metcalfe Society

Disclaimer: Please note that all links to external websites are given for information only.

The Metcalfe Society has no Connection or Control over these websites and is, therefore, not liable for any content therein or consequences of interacting with such websites.

You are receiving this message either because you are, or have previously been a member of The Metcalfe Society, or you have previously opted in to our mailing list. Please notify the Society if you no longer wish to receive it.